

BHCIP Eligible Facilities: DHCS LCD Substance Use Disorder Webinar



**Behavioral Health Continuum
Infrastructure Program**

November 2024

BHCIP Overview

- » In 2021 [legislation](#), the California Department of Health Care Services (DHCS) was authorized to establish BHCIP and award \$2.2 billion to eligible entities to construct, acquire, and expand properties and invest in mobile crisis infrastructure to improve the quality of and access to behavioral health care across the state.
- » In March 2024, California voters passed [Proposition 1](#), a two-bill package including the Behavioral Health Services Act (BHSA) ([Senate Bill 326](#)) and the Behavioral Health Infrastructure Bond Act of 2024 (BHIBA) ([Assembly Bill 531](#)).
 - The BHIBA portion is a \$6.38 billion general obligation bond to develop an array of behavioral health treatment, residential care settings, and supportive housing to help provide appropriate care facilities for Californians experiencing mental health conditions and substance use disorders.
 - DHCS was authorized to award up to \$4.4 billion in BHIBA funds for BHCIP competitive grants for behavioral health treatment.
 - In addition, DHCS will enact changes resulting from Proposition 1 through the Behavioral Health Transformation (BHT) project, which aims to modernize the behavioral health delivery system, improve accountability, increase transparency, and expand capacity of behavioral health care facilities for California residents.

Agenda

- » Welcome & Introductions
- » Department of Health Care Services (DHCS) Licensing and Certification Division (LCD) Overview
- » BHCIP Eligible Substance Use Disorder Licensed (SUD) Facility and Certified Programs
- » DHCS SUD License and/or Certification Application Process
- » Licensure of Residential SUD Facilities
- » Certification of SUD Programs
- » DHCS Level of Care (LOC) Designation/American Society of Addiction Medicine (ASAM) Level of Care Certification Overview
- » Helpful Resources

DHCS LCD Overview

- » DHCS has the sole authority to license, certify, and monitor alcohol or other drug programs, also known as substance use disorder (SUD) treatment facilities/programs (Health and Safety Code (HSC), Division 10.5, Chapter 7, Sections 11832, 11834.01, and 11834.30).
- » DHCS – LCD is responsible for licensure of residential SUD facilities, SUD program certification, compliance oversight, and client-related health and safety issues.
- » All licensed residential SUD facilities must obtain at least one DHCS Level of Care Designation and/or at least one residential ASAM LOC Certification consistent with all its program services.

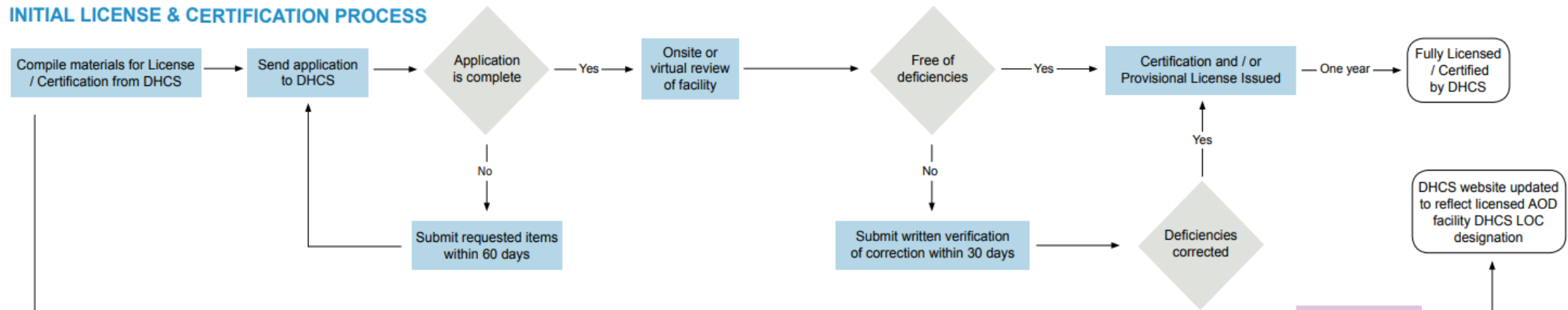
BHCIP Eligible SUD Licensed Facility and Certified Program

Outpatient/ Residential	Facility Types	License	SUD Certification	LOC/ ASAM Designation	LPS Designation
Outpatient	Hospital-based Outpatient Treatment (outpatient detoxification/withdrawal management) (Outpatient Treatment For SUD)	N/A	Mandatory	N/A	Voluntary
	Intensive Outpatient Treatment	N/A	Mandatory	N/A	N/A
Residential	Adult Residential SUD Treatment Facility	Mandatory	Voluntary	Mandatory	N/A
	Perinatal Residential SUD Facilities	Mandatory	Voluntary	Mandatory	N/A

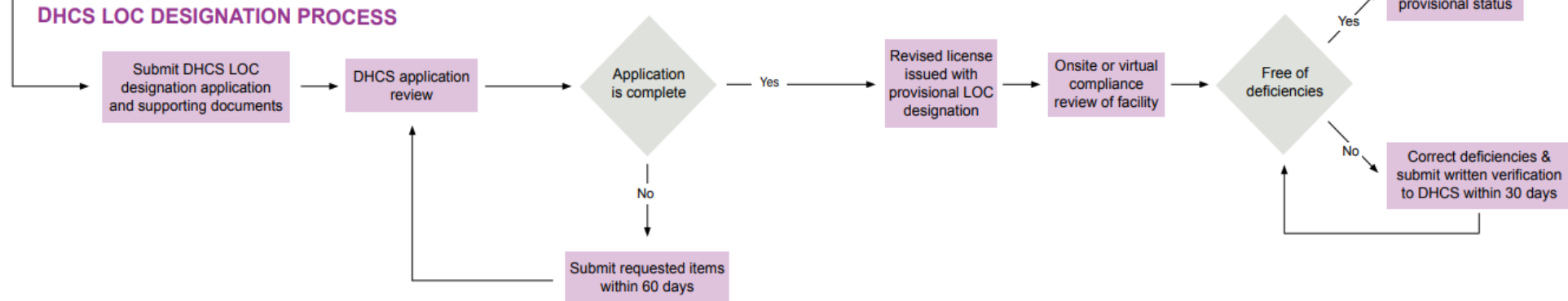
DHCS SUD License and/or Certification Application Process

» Substance Use Disorder Licensing and Certification Toolkit

INITIAL LICENSE & CERTIFICATION PROCESS



DHCS LOC DESIGNATION PROCESS



Licensure of Residential SUD Facilities



Application Process

» **BHCIP Eligible Facilities required to obtain DHCS License:**

- Adult Residential SUD Treatment Facility, and Perinatal Residential SUD Facility

» **Application:**

- [Initial Treatment Provider Application \(DHCS 6002\)](#)
- [Application for Existing Licensee to Obtain Initial Licensure for New Facility \(DHCS 6047\)](#)
- Current providers wishing to relocate, add or delete treatment services, increase/decrease treatment beds or change target population must complete the [Supplemental Application DHCS 5255](#)

» **How to submit:**

- Mail to the following address:

Department of Health Care Services
Licensing and Certification Division, MS 2600
PO Box 997413
Sacramento, California 95899-7413

- Email to: LCDQuestions@dhcs.ca.gov
- To access the DHCS online payment portal, go to the California Department of Health Care Services [EFT online portal](#)

» **Processing Time*:**

- 120 days after DHCS the Initial licensure application packet is deemed complete



**Behavioral Health Continuum
Infrastructure Program**

Initial Treatment Provider Application Checklist (DHCS 6002)

Application Packet Forms	Applies To
Tab 1. Initial Treatment Provider Application, Form DHCS 6002 (Rev.06/16)	All applicants
Tab 2. Approved articles of incorporation; partnerships must attach the partnership agreement; non-profit organizations must attach a copy of the 501(c)(3) filing from the California Secretary of State; sole proprietors must attach the Sole Proprietor Supplement	All applicants
Tab 3. Lease agreement, donated space agreement, or letter from school approving use of space	All applicants – except governmental entities
Tab 4. Bacteriological Analysis of Water	License applicants only
Tab 5. Fire Clearance (see Section E-5 of instructions)	All applicants
Tab 6. Zoning Clearance (see Section E-6 of instructions)	All outpatient applicants
Tab 7. Table of Administrative Organization	All applicants
Tab 8. Annual Line-Item Budget	All applicants
Tab 9. Community Resources	All applicants

Initial Treatment Provider Application Checklist (DHCS 6002) continuation

Application Packet Forms	Applies To
Tab 10. Outline of Activities and Services	All applicants
Tab 11. Program Description	All applicants
Tab 12. Statement of Program Goals and Objectives	All applicants
Tab 13. Program Evaluation Plan	All applicants
Tab 14. Program Mission and Philosophy Statement	All applicants
Tab 15. Continuous Quality Management Plan	All applicants
Tab 16. Job Descriptions	All applicants
Tab 17. Statement of Admission, Readmission and Intake Criteria	All applicants
Tab 18. Admission Agreement	All applicants
Tab 19. Sketch of Building and Grounds	License applicants only
Tab 20. Sample Menu	License applicants only
Tab 21. Safeguarding of Personal Property of Residents	License applicants only

DHCS SUD Licensure Fee Table

Residential Licensure Fees	
Application Type	FY 2024-25 Fee
Initial Residential Licensure Application Fee	\$4,392
Initial Biennial Residential Licensure Fee	\$467 (per bed)
Biennial Residential Licensure Extension Fee	\$467 (per bed)
Adolescent Waiver Application Fee	\$2,170
Dependent Children Application Fee (if not requested during initial licensure application)	\$1,518
Supplemental Application Fee (Increase or Decrease in Bed Capacity, Target Population Change, Removal of Address or Suite, Integral Facility, Program Name Change, Legal Entity Name Change, Addition or Removal of Services - i.e., Incidental Medical Services, Detoxification, Co-ed, etc.)	\$1,489 (per requested amendment to licensure and/or certification)
Facility Address Update (Facility Relocation, Adding Additional Address or Suite number(s))	\$1,452 (per requested amendment to licensure and/or certification)

[Substance Use Disorder \(SUD\) Recovery or Treatment Facilities' Licensure and Certification Fee Increase Beginning Fiscal Year \(FY\) 2024-2025](#)

Certification of SUD Programs



DHCS SUD Certification

- » BHCIP Eligible Facilities required to obtain SUD
 - Outpatient/Intensive Outpatient Treatment for SUD
 - Voluntary: Acute Psychiatric Hospital (APH), Adolescent Residential SUD Treatment Facility *Referred to as Group Home by CDSS, Adult Residential SUD Treatment Facility, Chemical Dependency Recovery Hospital (CDRH), and Children's Crisis Residential Program (CCRP)
- » HSC Chapter 7.1 (commencing with Section 11832) requires all outpatient SUD treatment programs which offer treatment, recovery, detoxification, or medication for addiction treatment (MAT) services to obtain a certification from DHCS.
- » SUD treatment facilities operating in the following settings are exempt from certification by DHCS, but may voluntarily seek certification:
 - Adult alcoholism or drug abuse recovery or treatment facilities, driving-under-the-influence programs, and narcotic treatment programs licensed by DHCS.
 - Clinics licensed by the State Department of Public Health in accordance with Chapter 1 (commencing with Section 1200) of Division 2.
 - Health facilities licensed by the State Department of Public Health in accordance with Chapter 2 (commencing with Section 1250) of Division 2.
 - Community care facilities licensed by the State Department of Social Services in accordance with Chapter 3 (commencing with Section 1500) of Division 2.
 - Residential care facilities for persons with chronic, life-threatening illness licensed by the State Department of Social Services in accordance with Chapter 3.01 (commencing with Section 1568.01) of Division 2.
 - Residential care facilities for the elderly licensed by the State Department of Social Services in accordance with Chapter 3.2 (commencing with Section 1569) of Division 2.
 - Adult day health care center's licensed by the State Department of Social Services in accordance with Chapter 3.3 (commencing with Section 1570) of Division 2.
 - Public elementary and secondary schools as defined in the Education Code.
 - County jails and state correctional institutions, including juvenile justice facilities.

Application Process

» Application:

- [Initial Treatment Provider Application \(DHCS 6002\)](#)
- [Initial Application for an Existing Certified Program to Obtain Initial Certification for New Program \(DHCS 6041\)](#)
- Current providers wishing to relocate, add a suite, add or delete treatment services, or change target population must complete the [Supplemental Application DHCS 5255](#)

» How to submit:

- Mail to the following address:

Department of Health Care Services
Licensing and Certification Division, MS 2600
PO Box 997413
Sacramento, California 95899-7413
- Email to: LCDQuestions@dhcs.ca.gov
- To access the DHCS online payment portal, go to the California Department of Health Care Services [EFT online portal](#)

» Processing Time:

- 120 days after DHCS the Initial certification application packet is deemed complete.

DHCS SUD Certification Fees

Certification Fees	
Application Type	FY 2024-25 Fee
Initial Outpatient Certification Application Fee	\$4,220
Initial Biennial Outpatient Certification Fee	\$5,470
Biennial Outpatient Certification Extension Fee	\$5,470
Biennial Residential Certification Fee (for facilities having a residential license issued by another State Department). The maximum fees for beds will not exceed the biennial certification fee	\$467 (per bed, with a maximum of \$5,470)
Supplemental Application Fee (Target Population Change, Removal of Address or Suite, Program Name Change, Legal Entity Name Change, Addition or Removal of Services - i.e., Detoxification, Co-ed, etc.)	\$1,489 (per requested amendment to certification)
Facility Address Update (Facility Relocation, Adding Additional Address or Suite Number(s))	\$1,452 (per requested amendment to certification)

[Substance Use Disorder \(SUD\) Recovery or Treatment Facilities' Licensure and Certification Fee Increase Beginning Fiscal Year \(FY\) 2024-2025](#)

DHCS SUD Licensure and Certification Combines Fees

Combined Residential Licensure and Certification Fees	
Application Type	FY 2024-25 Fee
Initial Combined Residential Licensure and Certification Application Fee	\$5,858
Initial Biennial Combined Residential Licensure and Certification Fee	\$467 (per bed)
Biennial Combined Residential Licensure and Certification Extension Fee	\$467 (per bed)
All other fees are as stated in the “Residential Licensure Fee” box	

[Substance Use Disorder \(SUD\) Recovery or Treatment Facilities’ Licensure and Certification Fee Increase Beginning Fiscal Year \(FY\) 2024-2025](#)

DHCS LOC and ASAM LOC



DHCS LOC and ASAM LOC Overview

- » DHCS is required to adopt the ASAM treatment criteria, or an equivalent evidence-based standard, as the minimum standard of care for licensed adult SUD facilities.
- » The following are the DHCS LOC Designations:
 - DHCS Level 3.1 – Clinically Managed Low-Intensity Residential Services
 - DHCS Level 3.2 – Clinically Managed Residential Withdrawal Management
 - DHCS Level 3.3 – Clinically Managed Population-Specific High-Intensity Residential Services
 - DHCS Level 3.5 – Clinically Managed High-Intensity Residential Services
- » All SUD applicants must obtain at least one DHCS LOC Designation and/or at least one residential ASAM LOC Certification consistent with all its program services. If SUD facility opts to obtain an ASAM LOC Certification, then that facility will not be required to obtain a DHCS LOC Designation. However, nothing precludes a facility from obtaining both a DHCS LOC Designation and ASAM LOC Certification.

DHCS LOC Designation

- » Facilities must obtain at least one DHCS LOC Designation and/or at least one residential ASAM or LOC Certification consistent with all of its program services.
- » BHCIP Eligible Facilities required to obtain DHCS LOC Designation:
 - All Licensed Adult SUD Facilities
- » Application:
 - [DHCS Level of Care Designation Application \(DHCS 4022\)](#)
- » Fees:
 - None
- » Processing Time*:
 - 120 days of DHCS receiving and determining the initial application packet is complete



**Behavioral Health Continuum
Infrastructure Program**

ASAM LOC Certification

- » The ASAM Level of Care Certification Program provides an independent assessment of a treatment program's ability to deliver services consistent with The ASAM Criteria. Delivered in partnership with CARF International (CARF), is the first program of its kind to independently assess and verify treatment programs' capacity to deliver services consistent with the level of care standards described in The ASAM Criteria.
- » Applicants must obtain at least one DHCS LOC Designation and/or at least one residential ASAM or LOC Certification consistent with all of its program services.
- » BHCIP Eligible Facilities required to obtain ASAM certification:
 - All Licensed Adult SUD Facilities
- » Application & Processing Times:
 - [Steps to certification - CARF International](#)
 - Please refer to ASAM/CARF for additional support
- » How to Apply:
 - Upon request, CARF will provide an application for certification via [Customer Connect](#). In the case of recertification, an application is provided before expiration of the current certification. CARF will review the submitted application and may request additional information.

ASAM LOC Certification Fees

CARF International Level of Care Certification Fees		
Type of Fee	Certification (Accredited)	Certification (Unaccredited)
Base Fee	\$3,350 \$3,450	\$4,350 \$4,450
Additional Fee	\$500 for each Additional Level of Care	
Rescheduling Fee	\$1,000	
Review Fee	\$300 (Summary review) or \$3,000 (Full Review)	

[Fees-LOC-JUL2024-JUN2026.pdf \(carf.org\)](#)

Helpful Resources

- » DHCS License and Certification Website:
https://www.dhcs.ca.gov/provgovpart/Pages/Licensing_and_Certification_Division.aspx
- » Regulations for License:
 - [California Code of Regulations \(CCR\), Title 9, Division 4, Chapter 5, §10505](#)
- » Standards for Certification:
 - [Chapter 7.1 \(commencing with Section 11832\), Part 2, Division 10.5](#) of the Health and Safety Code
 - [Alcohol and Other Drug Certification Standards](#)
- » DHCS LCD Contact Information:
 - Public Number: (916) 322-2911
 - Toll Free Number: (877) 685-8333
 - Email: LCDQuestions@dhcs.ca.gov

Questions?

